



LUDWIG-
MAXIMILIANS-
UNIVERSITÄT
MÜNCHEN

FAKULTÄT FÜR MATHEMATIK, INFORMATIK UND STATISTIK
INSTITUT FÜR INFORMATIK
ARBEITSGRUPPEN MEDIENINFORMATIK UND
MENSCH-MASCHINE-INTERAKTION



Group Mirror

From Mirroring to Guiding

Rea Schmidt



1. Problems and Aims

2. The Collaboration Management Cycle

3. Three types of tools

- Mirroring tools
- Meta- cognitive tools
- Guiding systems



Problems:

- Prior Knowledge
- Motivation
- Roles
- Language
- Behaviour
- Group dynamics



Aims:

- Understand, explain, and predict patterns of group behaviour
- Support group learning processes
- Determine how to structure the environment in which the collaboration takes place
- Regulate the student interaction during the learning activities

The Collaboration Management Cycle

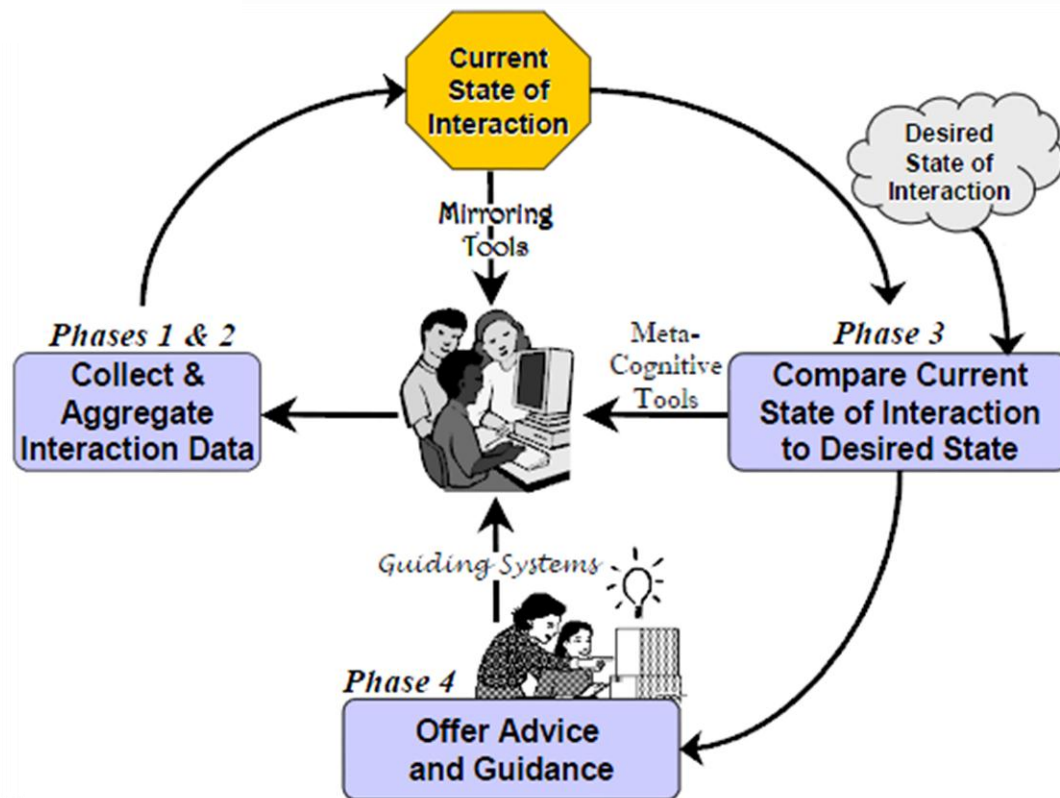


Figure 1. Collaboration Management Cycle

Group Mirror

Three types of tools

1. Mirroring tools

- Collect data
- Reflect this information back to user
- Responsibility for making decisions: User

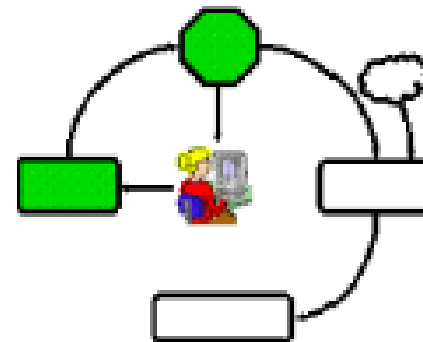


Figure 2. Mirroring tools

Three types of tools

2. Meta- cognitive tools

- Provides the referents needed by the learners or coaches to diagnose the interaction
- Responsibility for making decisions: User

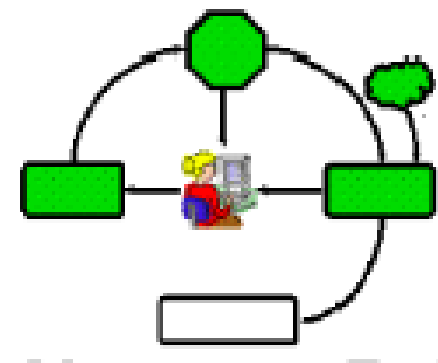


Figure 3. Meta- cognitive tools

Three types of tools

3. Guiding tools

- Perform all the phases in the collaboration management process
- Propose remedial actions to help the learners
- Information typically hidden
- System uses information to make decision about how to moderate the group's interaction

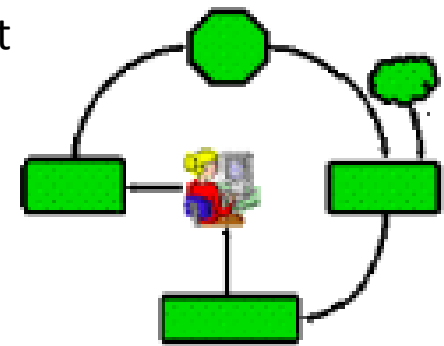


Figure 4. Guiding tools



A REVIEW OF SYSTEMS THAT SUPPORT COLLABORATIVE LEARNING

Mirroring tools

Chat circles

- Running since 1999
- uses abstract shapes to convey identity and activity

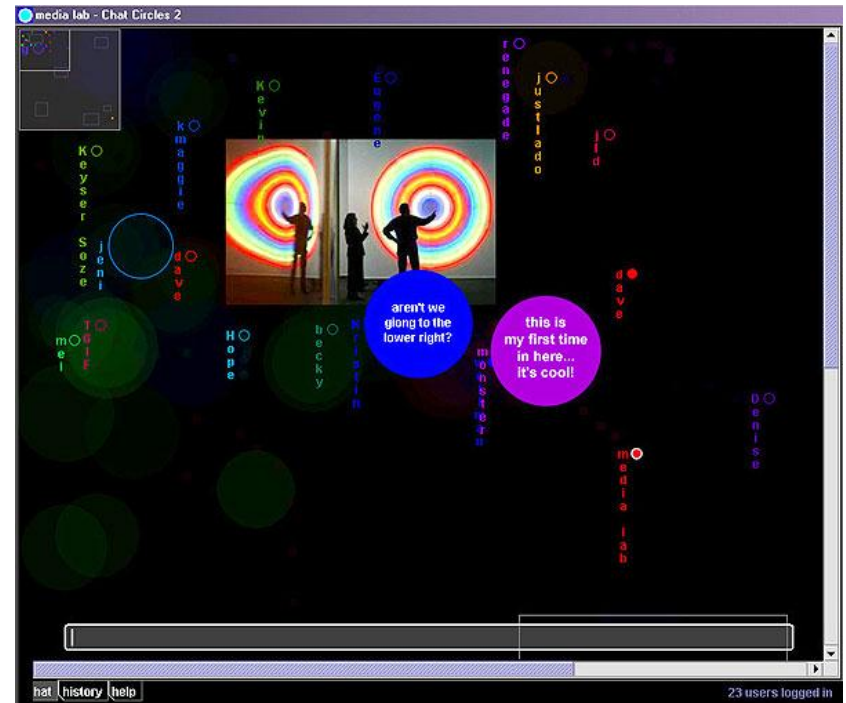


Figure 5. Chat circles



Meta-cognitive tools

German

- Solving a problem
 - Visualization
 - Chat
- Number of messages each student has sent

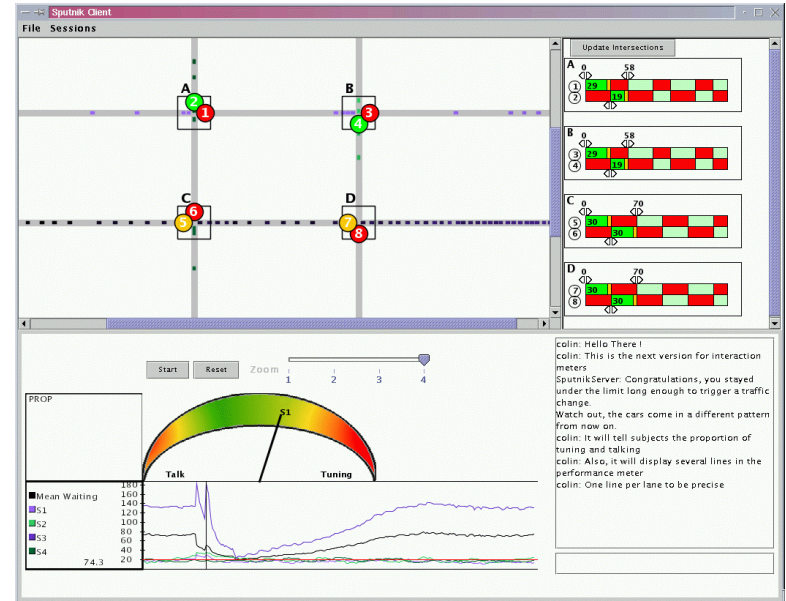
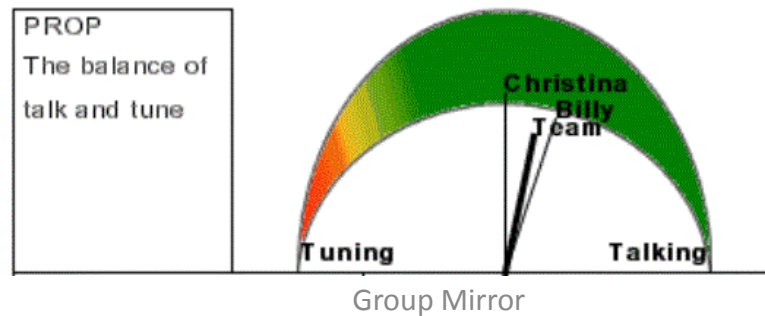


Figure 6. Jerman



Guiding tools

COLER Workspace

- Individually workspace
- Collaborate to produce Entity- Relationship model
- Feedback to the student about differences



Figure 7. COLER

Guiding tools

HabiPro

- System includes a simulated peer agent that detects off-topics word in the students utterance

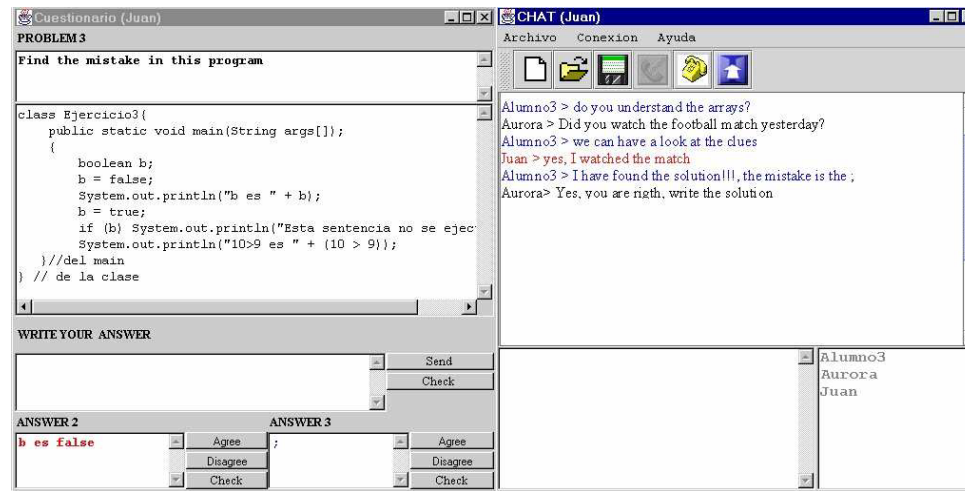


Figure 8. HabiPro



Mirroring tools

System	Input data	Output	Expected function
Chat Circles (Donath, Karahalios & Viegas, 1999)	Dialog in an unstructured virtual space	Graphical visualization	On-line social awareness

Meta-cognitive tools

System	Input data	Output	Expected function
Jermann (2004)	Chat and problemsolving actions	Graphical visualization	Teachers: Analyze interaction Students: Self regulation

Guiding tools

System	Input data	Output	Expected function
COLER, (Constantin o González et al., 2002)	Shared and private actions, dialog	Coach	On-line feedback of participation & workspace differences
HabiPro, Vizcaino (2001)	Shared workspace actions, student preferences dialog	Coach	Detection of off-topic interaction & on-line guidance to students

Image sources

Figure 1. Collaboration Management Cycle

AMY SOLLER, ALEJANDRA MARTÍNEZ MONÉS, PATRICK JERMANN & MARTIN MUEHLENBROCK (2008): From Mirroring to Guiding: A Review of State of the Art Technology for Supporting Collaborative Learning, University of Oslo. S.4

Figure 2. Mirroring tools

AMY SOLLER, ALEJANDRA MARTÍNEZ MONÉS, PATRICK JERMANN & MARTIN MUEHLENBROCK (2008): From Mirroring to Guiding: A Review of State of the Art Technology for Supporting Collaborative Learning, University of Oslo. S.7

Figure 3. Meta- cognitive tools

AMY SOLLER, ALEJANDRA MARTÍNEZ MONÉS, PATRICK JERMANN & MARTIN MUEHLENBROCK (2008): From Mirroring to Guiding: A Review of State of the Art Technology for Supporting Collaborative Learning, University of Oslo. S.7

Figure 4. Guiding tools

AMY SOLLER, ALEJANDRA MARTÍNEZ MONÉS, PATRICK JERMANN & MARTIN MUEHLENBROCK (2008): From Mirroring to Guiding: A Review of State of the Art Technology for Supporting Collaborative Learning, University of Oslo. S.7

Figure 6. Jerman

AMY SOLLER, ALEJANDRA MARTÍNEZ MONÉS, PATRICK JERMANN & MARTIN MUEHLENBROCK (2008): From Mirroring to Guiding: A Review of State of the Art Technology for Supporting Collaborative Learning, University of Oslo. S.14

Figure 7. COLER

AMY SOLLER, ALEJANDRA MARTÍNEZ MONÉS, PATRICK JERMANN & MARTIN MUEHLENBROCK (2008): From Mirroring to Guiding: A Review of State of the Art Technology for Supporting Collaborative Learning, University of Oslo. S.25

Figure 5. Chat circles

<http://alumni.media.mit.edu/~fviegas/projects/chatcircles/> (16.06.2011)



Sources

AMY SOLLER, ALEJANDRA MARTÍNEZ MONÉS, PATRICK JERMANN & MARTIN MUEHLENBROCK (2008); From Mirroring to Guiding: A Review of State of the Art Technology for Supporting Collaborative Learning, University of Oslo

<http://www.uio.no/studier/emner/matnat/ifi/TOOL5100/v08/leseliste/F10/>

PIERRE DILLENBOURG & FRANK FISCHER (2007): Basics of Computer-Supported Collaborative Learning. Zeitschrift für Berufs- und Wirtschaftspädagogik. 21, pp. 111-130.

<http://www.muehlenbrock.de/publications/Muehlenbrock-ITS%20W9%20Proceedings.pdf> (16.06.2011)

James C. Lester, Rosa M. Vicari (2004): Intelligent Tutor Systems, 7th International Conference, ITS 2004. Springer Verlag



LUDWIG-
MAXIMILIANS-
UNIVERSITÄT
MÜNCHEN

FAKULTÄT FÜR MATHEMATIK, INFORMATIK UND STATISTIK
INSTITUT FÜR INFORMATIK
ARBEITSGRUPPEN MEDIENINFORMATIK UND
MENSCH-MASCHINE-INTERAKTION



Vielen Dank für eure Aufmerksamkeit!